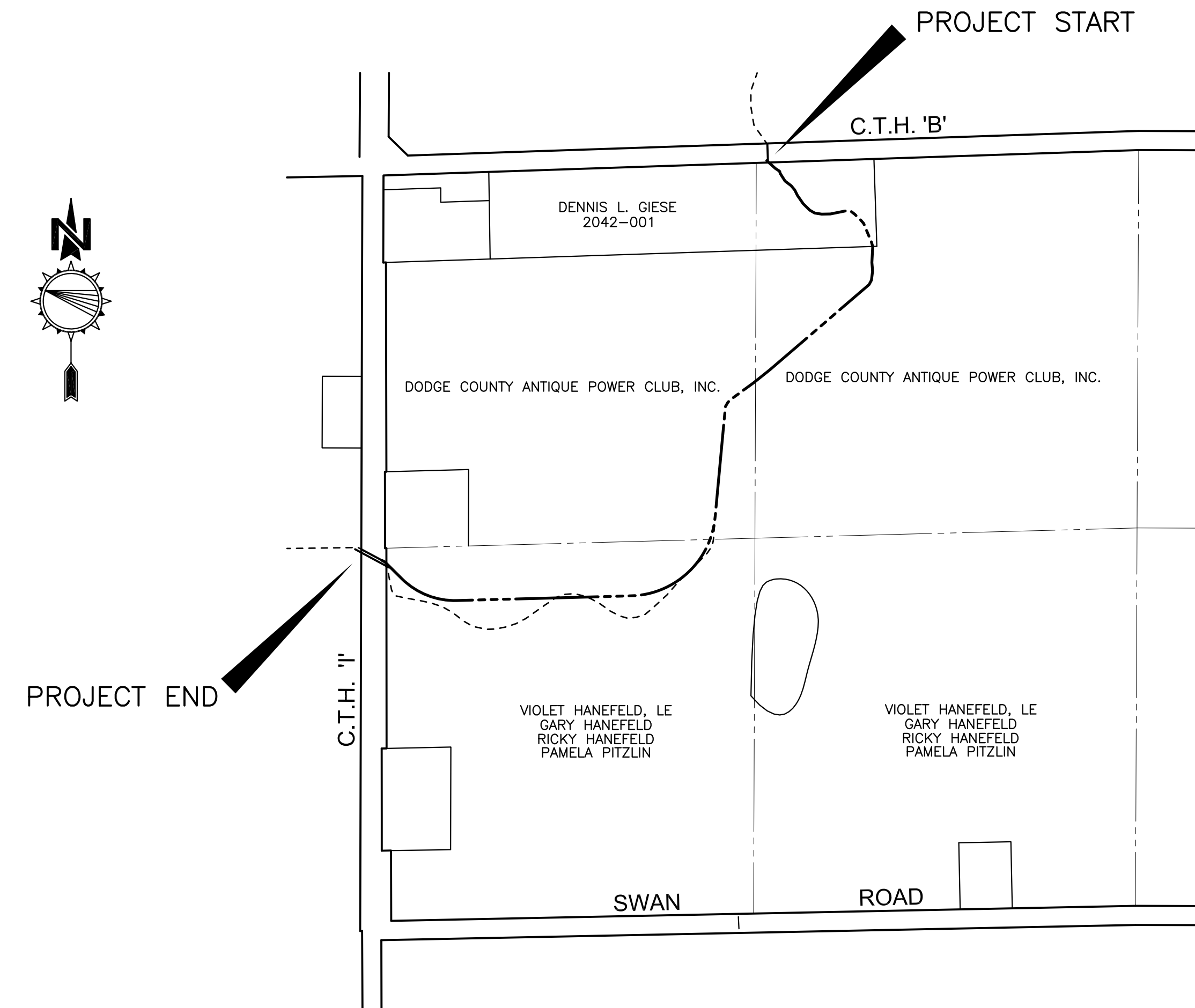
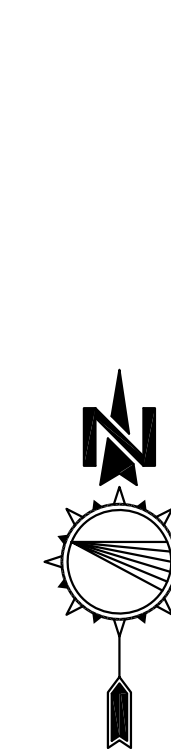
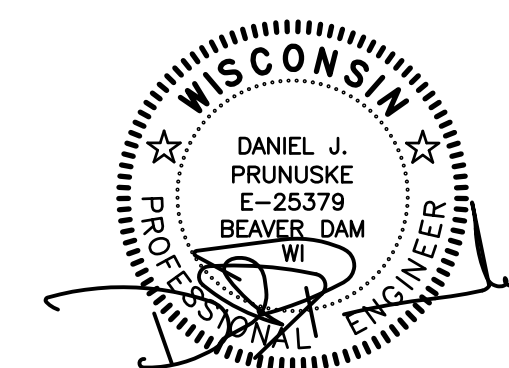


DODGE COUNTY, WI



INDEX TO SHEETS

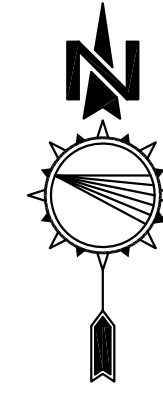
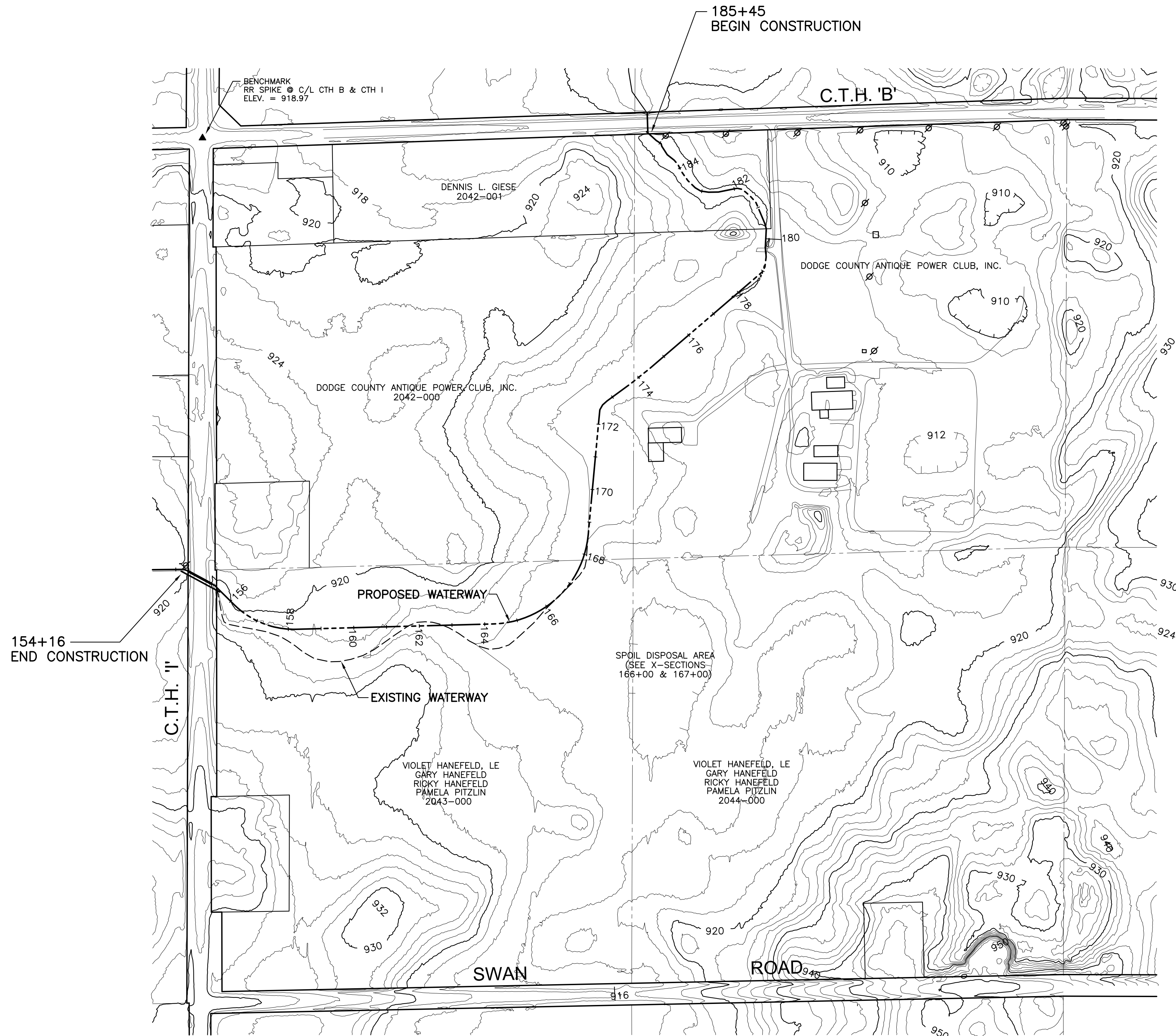
- 1 TITLE, LOCATION, INDEX
- 2 TOPOGRAPHY & SITE PLAN
- 3-4 WATERWAY PLAN/PROFILE
- 5-6 WATERWAY X-SECTIONS



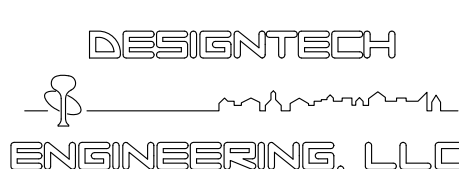
DESIGNTECH
ENGINEERING, LLC

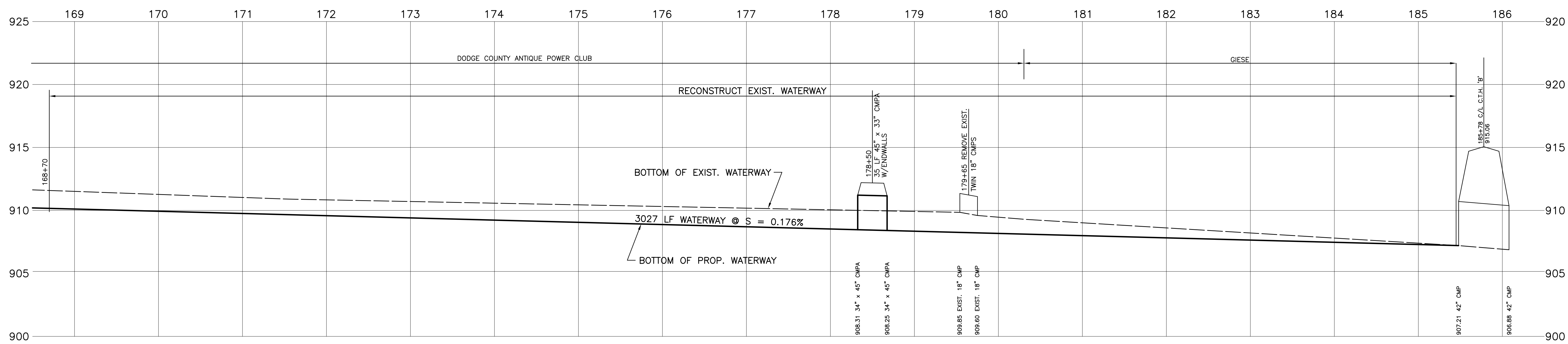
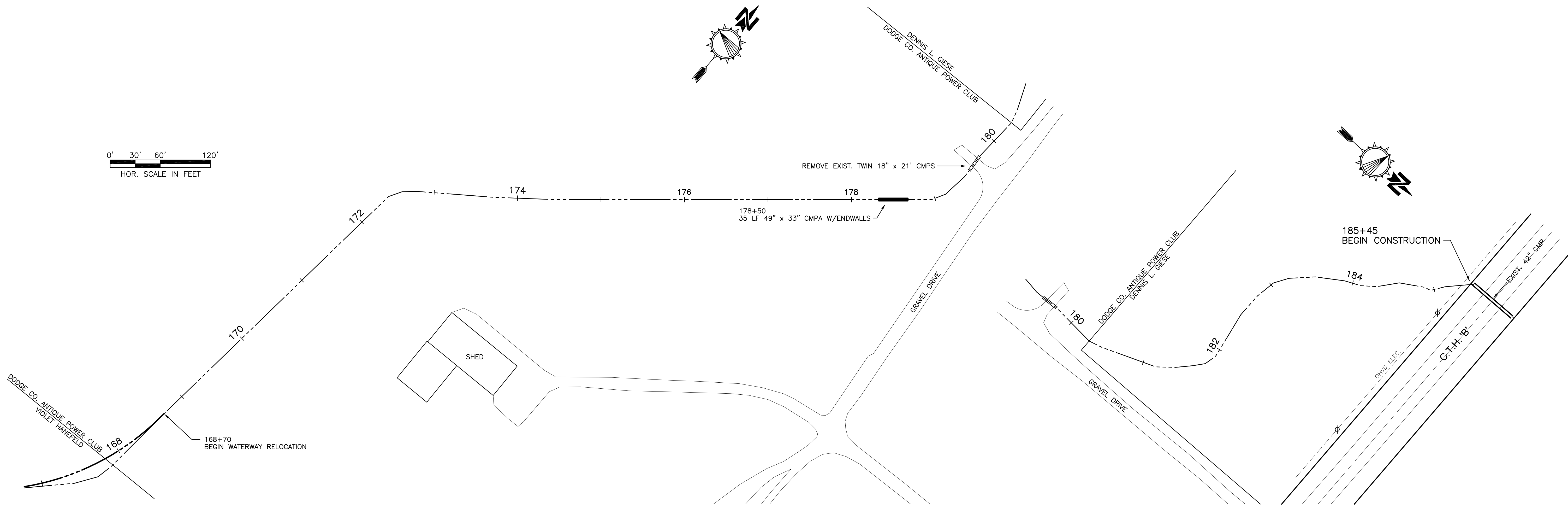
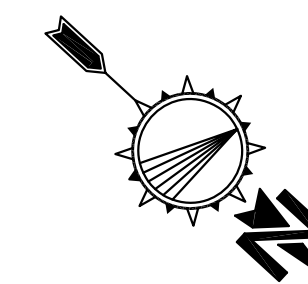
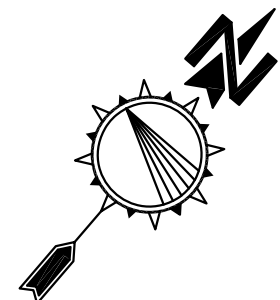
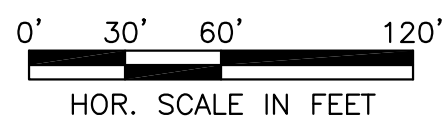
P.O. Box 293
Beaver Dam, WI 53916
(920) 887-3128
www.dteusa.com
© 2013 DesignTech Engineering, LLC.

DODGE COUNTY DRAINAGE DISTRICT 88 MAIN CHANNEL WATERWAY		
DRAWN BY: DJP	DATE	SHEET
APPROVED: DJP	JUNE 20, 2013	1 OF 6
SCALE: NONE	JOB NO. dd88	



0' 100' 200' 400'
SCALE IN FEET

 P.O. Box 293 Beaver Dam, WI 53916 (920) 887-3128 www.dteusa.com © 2013 DesignTech Engineering, LLC.	DODGE COUNTY DRAINAGE DISTRICT 88 TOPOGRAPHY & SITE PLAN		
	DRAWN BY: DJP	DATE:	SHEET:
	APPROVED: DJP	JUNE 20, 2013	2 OF 6
	SCALE: GRAPHIC	JOB NO. dd88	



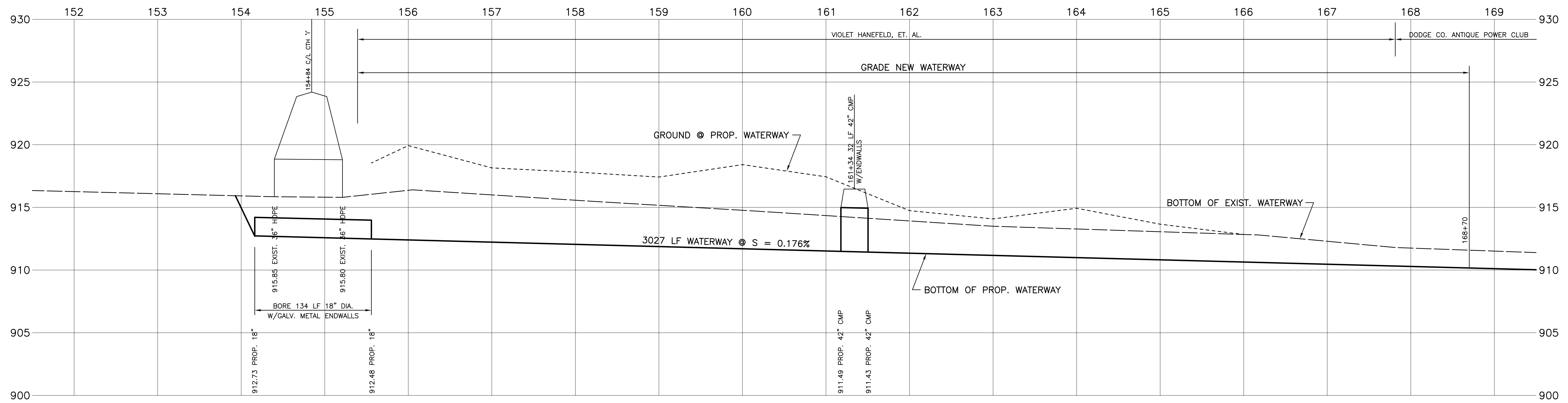
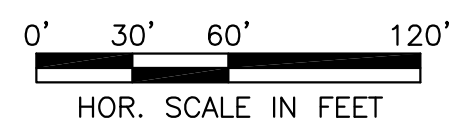
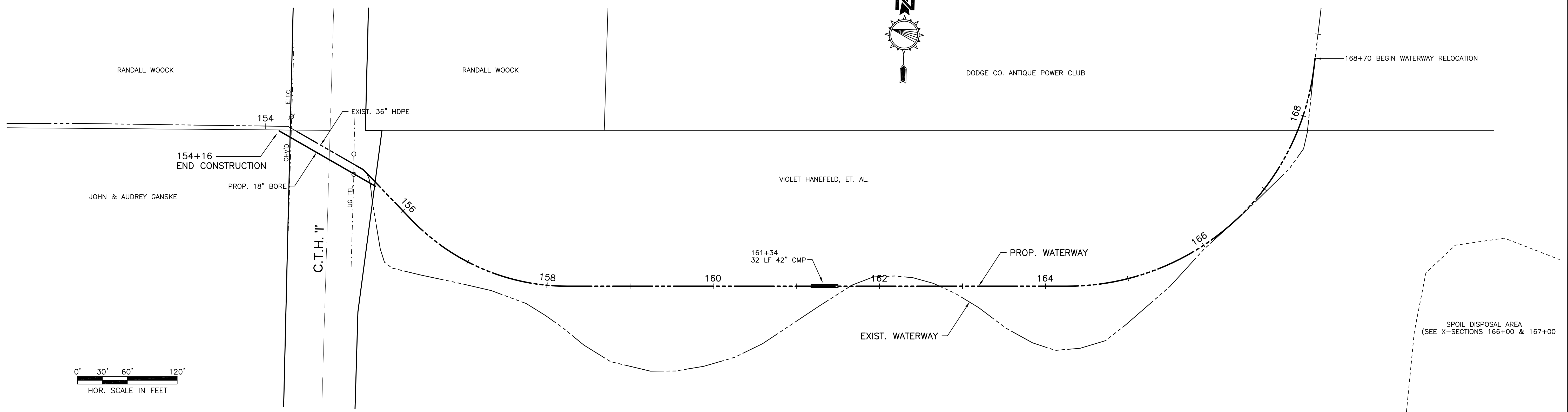
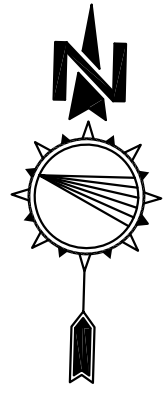
REVISED 10/3/13 DJP

DESIGNTECH
ENGINEERING, LLC

P.O. Box 293
Beaver Dam, WI 53916
(920) 887-3128
www.dteusa.com
© 2013 DesignTech Engineering, LLC.

DODGE COUNTY
DRAINAGE DISTRICT 88
MAIN CHANNEL

DRAWN BY: DJP	DATE: JUNE 20, 2013	SHEET 3 OF 6
APPROVED: DJP	JOB NO.: dd88	
SCALE: GRAPHIC		



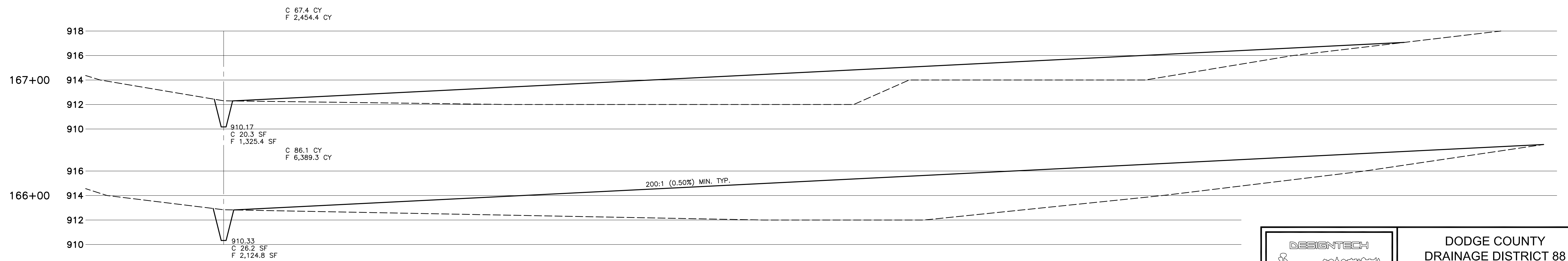
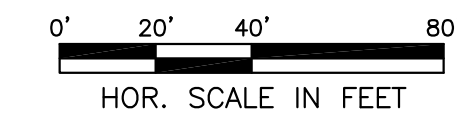
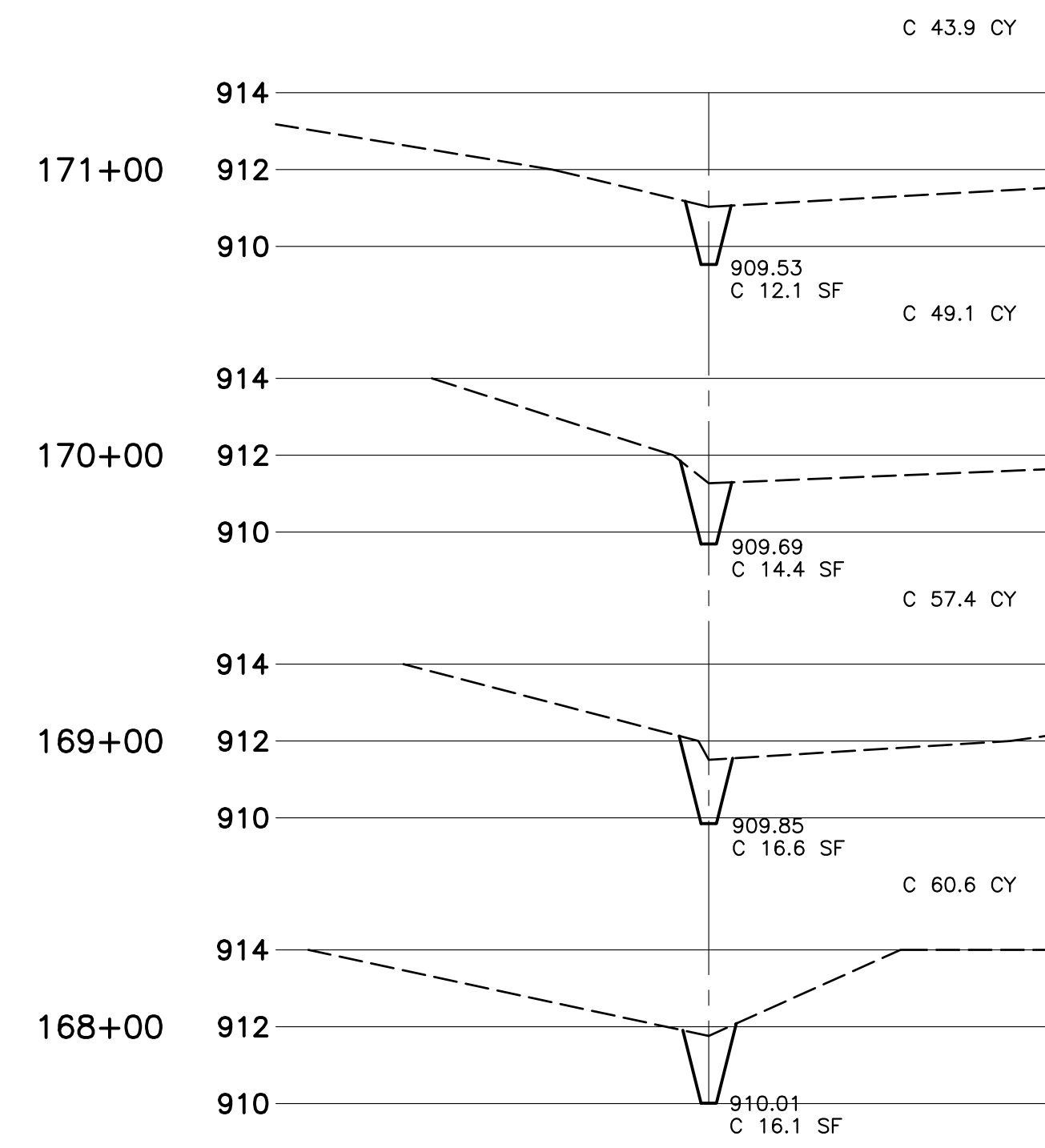
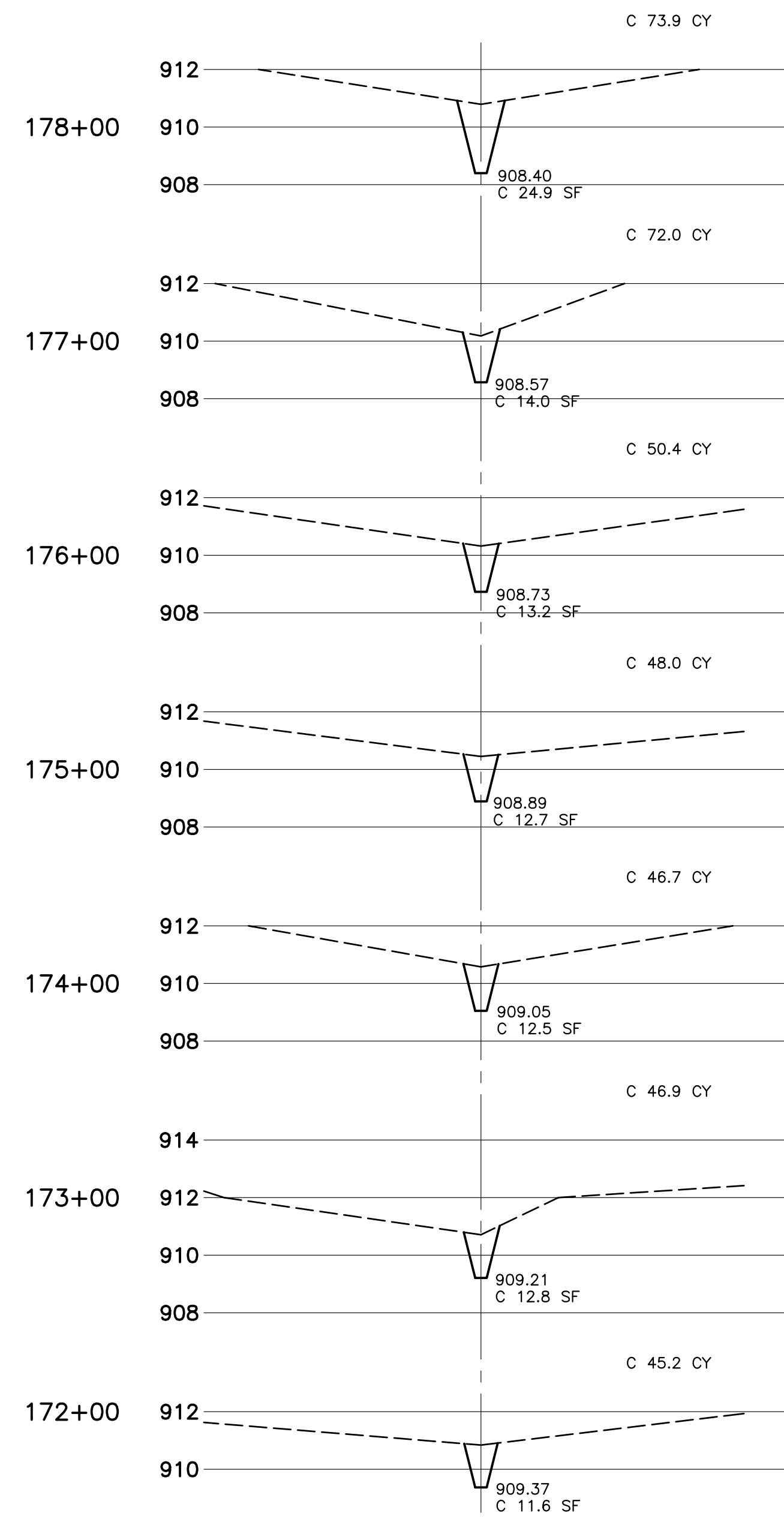
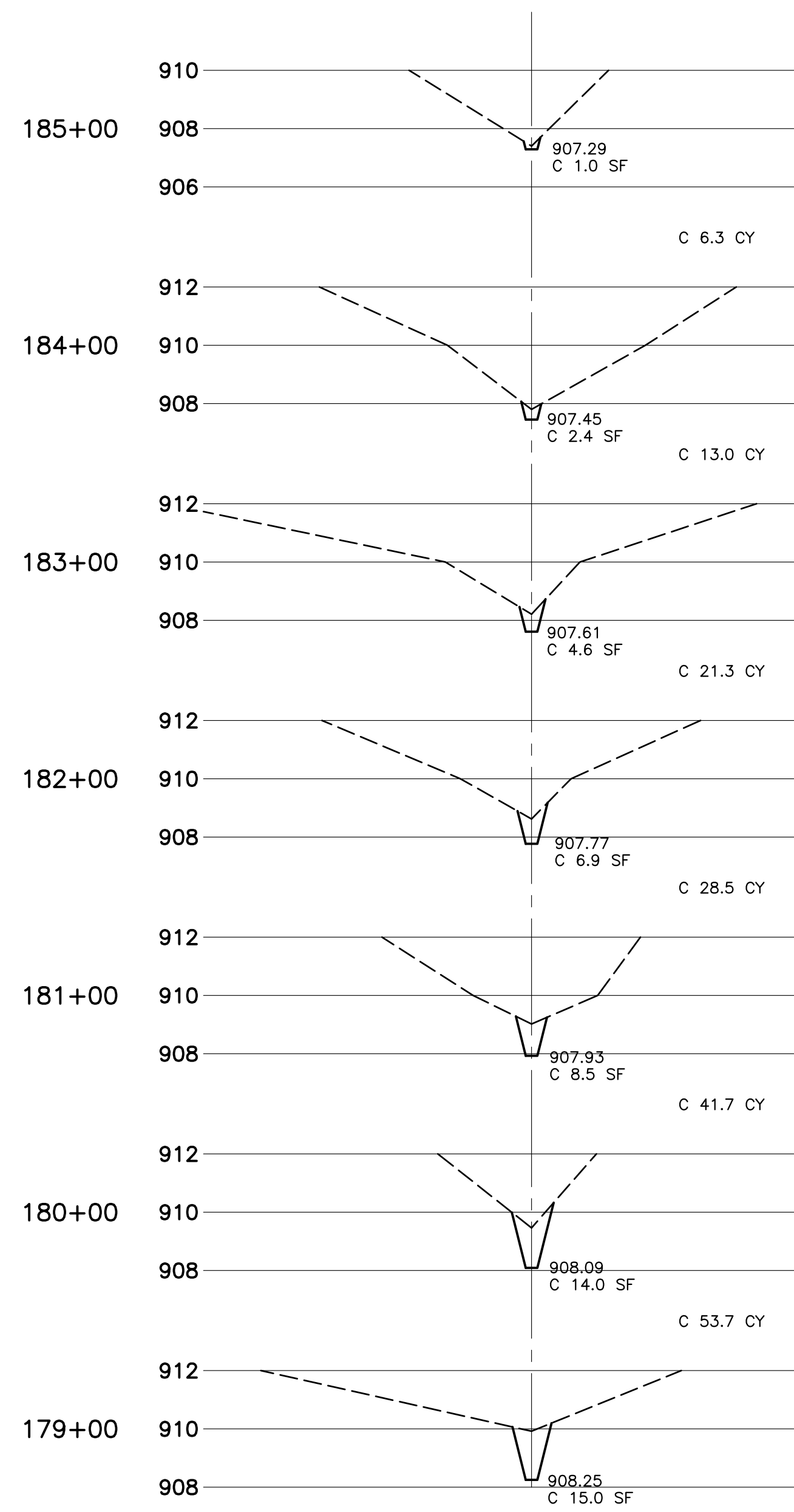
REVISED 10/3/13 DJP

DESIGNTECH
ENGINEERING, LLC

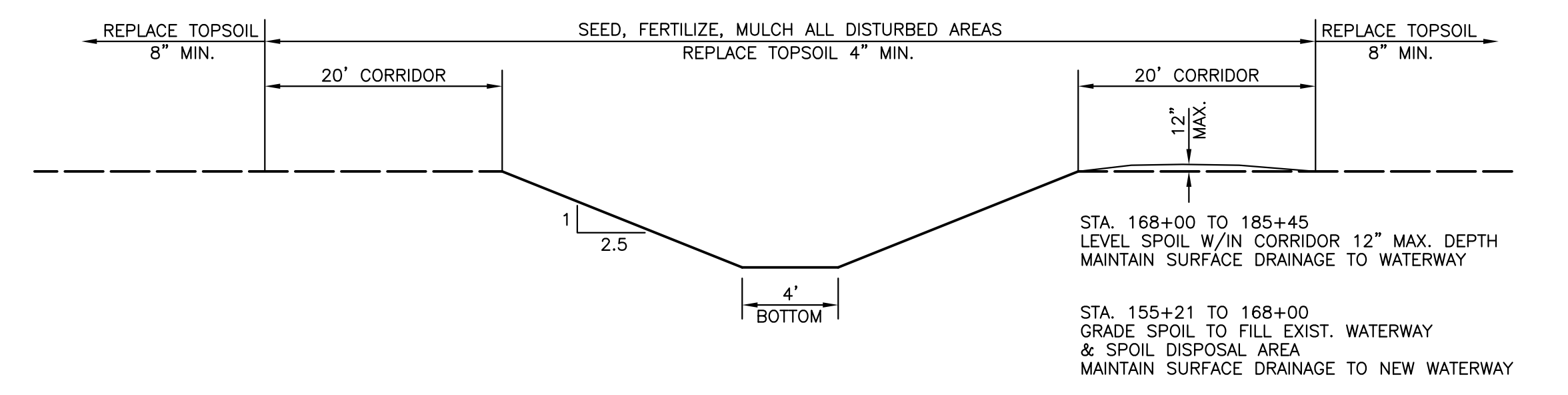
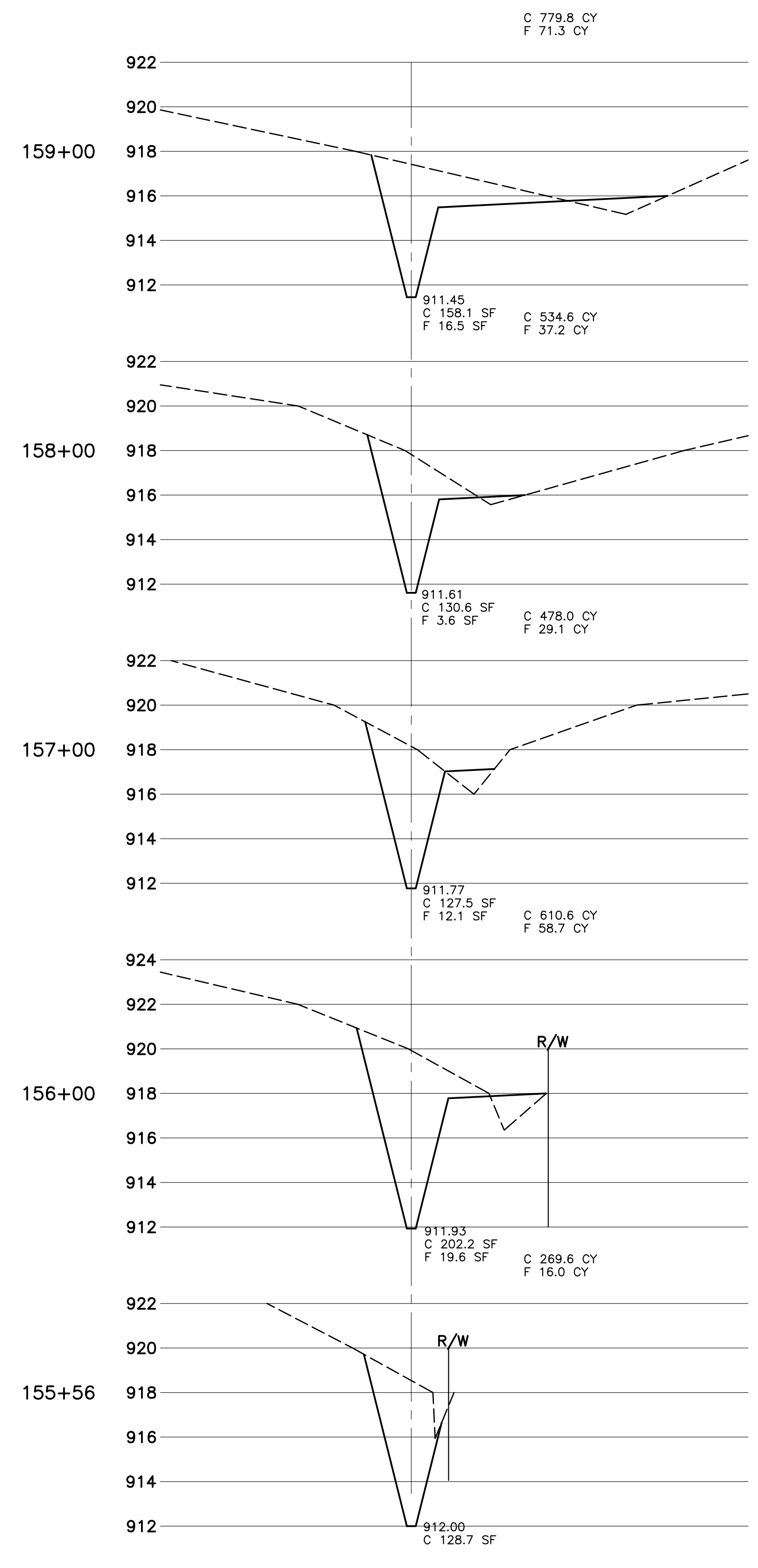
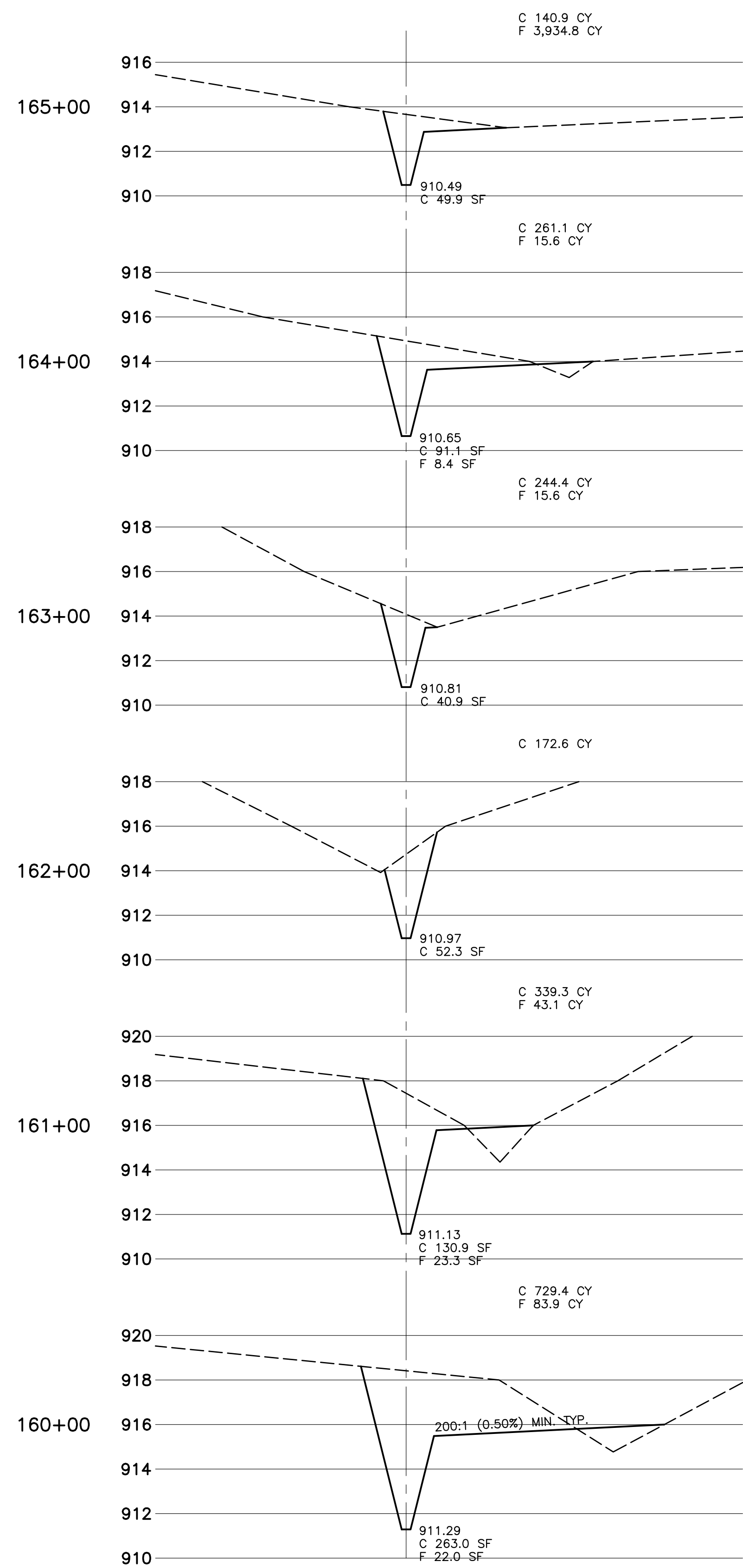
P.O. Box 293
Beaver Dam, WI 53916
(920) 887-3128
www.dteusa.com
© 2013 DesignTech Engineering, LLC.

DODGE COUNTY
DRAINAGE DISTRICT 88
MAIN CHANNEL

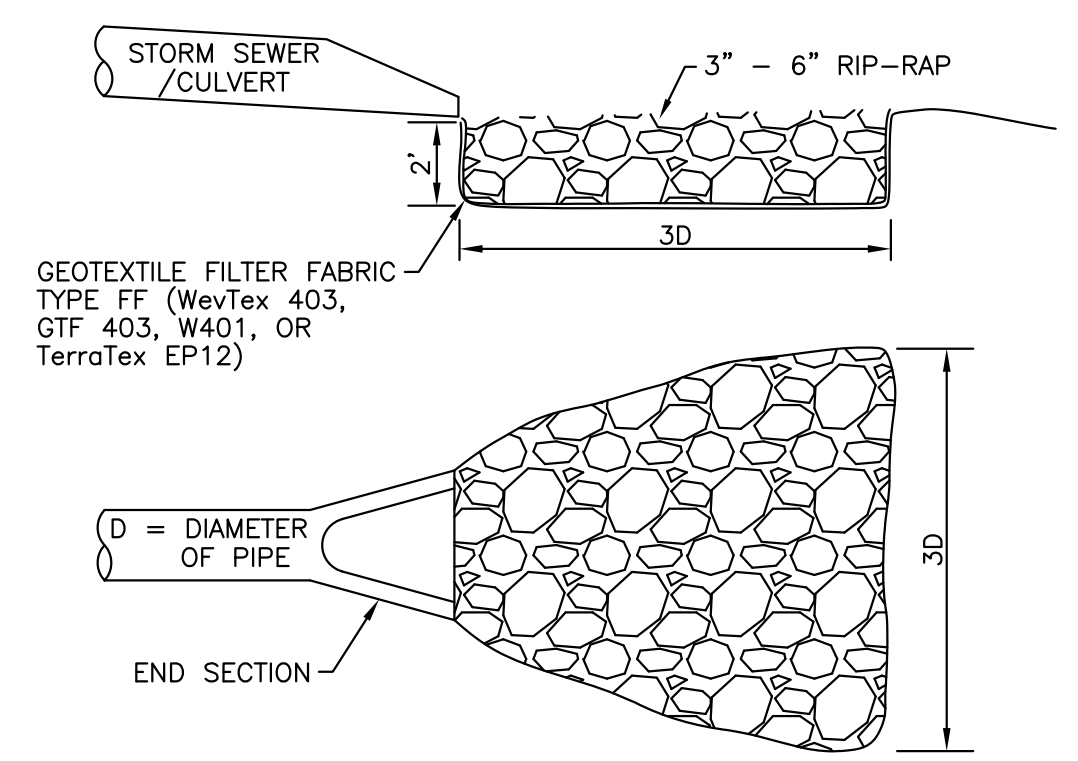
DRAWN BY: DJP	DATE	SHEET
APPROVED: DJP	JUNE 20, 2013	4 OF 6
SCALE: GRAPHIC	JOB NO. dd88	



	DODGE COUNTY DRAINAGE DISTRICT 88 WATERWAY X-SECTIONS	
	P.O. Box 293 Beaver Dam, WI 53916 (920) 887-3128 www.dteusa.com © 2013 DesignTech Engineering, LLC.	DRAWN BY: DJP APPROVED: DJP SCALE: GRAPHIC
		SHEET 5 of 6

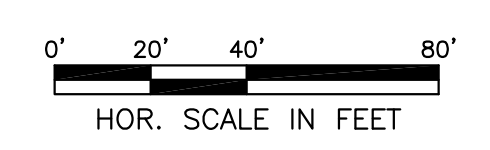


GRASS WATERWAY DETAIL
NTS



CULVERT RIP-RAP DETAIL
NTS

TOTAL GROSS CUT = 5,472 CY
 TOTAL GROSS FILL = 13,149 CY
 NOTE: NO PROVISIONS MADE IN ANY QUANTITIES
 FOR TOPSOIL AND COMPACTION



 P.O. Box 293 Beaver Dam, WI 53916 (920) 887-3128 www.dteusa.com © 2013 DesignTech Engineering, LLC.	DODGE COUNTY DRAINAGE DISTRICT 88 WATERWAY X-SECTIONS	
	DRAWN BY: DJP APPROVED: DJP SCALE: GRAPHIC	DATE: JUNE 20, 2013 JOB NO.: dd88